

Recommendation # 1:

The systems furniture floor feed locations should be changed from two to three due to the quantity of Category 6 cables being installed for telecom and to allow for the possibility of a greater power utilization.

Recommendation # 2:

Each location requiring a systems furniture floor feed should have two floor boxes due to the quantity of Category 6 cables being installed for telecom.

The first box should be a combination power and telecom feed.

The second box should be a telecom feed.

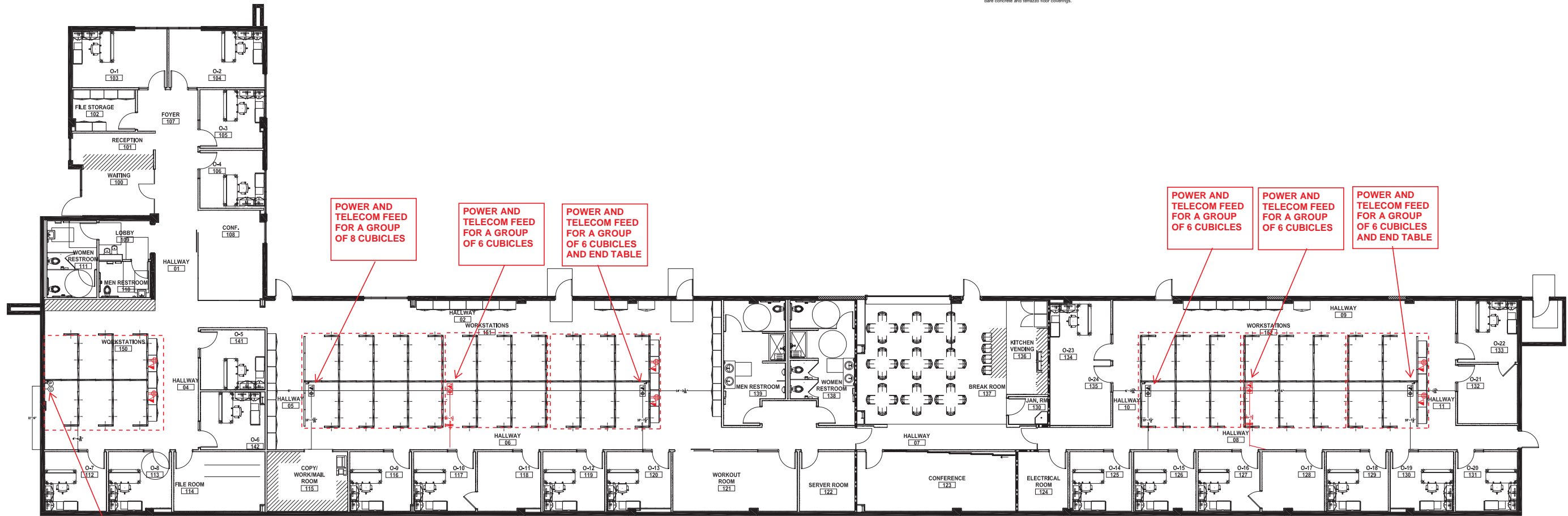
FEATURES & BENEFITS (continued)

- Auto-close egress doors.** Cable egress doors lock in position when open, and automatically close around wires to protect cabling and reduce trip hazards.
- Accommodates standard size wall plates.** Evolution Series Floor Boxes accept industry standard single, double, and triple-gang wall plates from industry leading manufacturers.
- Finished interior.** Fully finished interior removes the unfinished industrial look while increasing visibility, making it easier to see where to plug in devices.
- Large capacity.** 6- to 10-gangs of capacity to accommodate power, communications, and A/V devices. A minimum of 5" (127mm) of space between devices providing ample space for hand access when plugging and unplugging into the devices.
- Multiple size knockouts.** All Evolution Series Floor Boxes are available with multiple trade size knockouts ranging in size from 3/4" to 2" allowing for multiple activations and wiring configurations.
- Die cast aluminum cover assemblies.** Evolution Series Floor Box Covers have been designed to work on multiple floor surfaces and are manufactured from die cast aluminum to provide strength and style. Decorative powder coat colors (black, brass, bronze, gray and nickel) will complement any room decor.
- Cable Management.** Allows multiple cables to be organized and controlled for easier egress.
- Furniture Feed.** Designed to be installed in concrete, stone and wood floors. Provides large capacity feeds (up to 3") Trade size knockouts for power, communications and A/V devices.
- Bare (optional) concrete and terrazzo applications.** Evolution Series Floor Box has been designed to be installed into bare (optional) concrete and terrazzo floors.
- Meets ADA Accessibility Guidelines.** Trim flange is designed to meet the ADA Accessibility Guidelines as it pertains to ADA Standard 4.5, which addresses the change in floor and ground surface levels.
- TopGuard® Protection.** Evolution Series Floor Box covers meet and exceed UL 508a water exclusion requirements for tile, carpet, wood, bare concrete and terrazzo floor coverings.

Evolution Series EFBFF Furniture Feed Floor Box Ordering Information (continued)	
Catalog No./Item	Description/Specifications
EFBFF-DIV	Divider – Provides separation of services. Country of Origin: USA
FP-CTR	Bare Concrete & Terrazzo Ring – Nonmetallic ring for use on bare polished concrete and terrazzo floor applications. Country of Origin: USA NOTE: Ring must be attached to the floor box before pouring concrete or terrazzo.
EFBFF-CLL	Concrete Leveling Legs – Legs allow floor box to be adjusted up or down to match the desired pour height of the concrete. Includes two (2) leveling legs. Threaded rod not supplied. Country of Origin: USA

Furniture Feed Cover Assembly – Flanged cover for use in tile or carpet or wood floor installations. Die-cast aluminum assembly available in powder coat finishes of black (BK), bronze (BZ), brass (BS), nickel (NK), gray (GY), or brushed aluminum (AL).
Provided with one 1" trade size screw plug for power or communication type cabling and one combination 1 1/4" and 2" trade size screw plug for communication and A/V type cabling. Allows for feeding both power and communication cabling.
Country of Origin: USA

NOTE: Flangeless FloorPort Series (FPFFT) covers are not designed to work with Evolution Series Furniture Feed Floor Boxes.



POWER AND TELECOM FEED FOR A GROUP OF 6 CUBICLES AND END TABLE

POWER AND TELECOM FEED FOR A GROUP OF 8 CUBICLES

POWER AND TELECOM FEED FOR A GROUP OF 6 CUBICLES

POWER AND TELECOM FEED FOR A GROUP OF 6 CUBICLES AND END TABLE

POWER AND TELECOM FEED FOR A GROUP OF 6 CUBICLES

POWER AND TELECOM FEED FOR A GROUP OF 6 CUBICLES

POWER AND TELECOM FEED FOR A GROUP OF 6 CUBICLES AND END TABLE